

KEY FEATURES

Custom build for electricity surveys

Fast and reliable point collection

Straight workflow for reproducible results

TRIMBLE ACCESS: POWER LINE

CABLE SAG ESTIMATION THE EASY WAY

STREAMLINED WORKFLOW

The Trimble Power Line application adds a powerful tool to the Trimble® Access™ family of applications.

It provides a streamlined conventional survey workflow to record points on both power pole and line.

The process of estimating the coordinates of the cable as well as the distance to ground is based on angle measurements and gives the user immediate information about the current height.

DEFINE YOUR POINTS

The wizard-based workflow in the Power Line software helps you define key points on the power pole. Key points are trigger points that can be used to, for example, automatically create a virtual plane between points on two power poles or launch a coordinate geometry calculation.

MEASURE POWER LINE

The power line measure or stakeout workflow consists of two parts:

- Virtual line definition which defines and sub-divides a line between two points
- Stakeout for measuring the line elements.

The workflow helps the operator to create consistent and reproducible cable sag estimates by:

- Driving the total station to the horizontal position of the calculated cable segment
- Adjusting the total station gun vertically so it points to the cable
- Performing angle-only measurements and projecting the distance to the virtual line

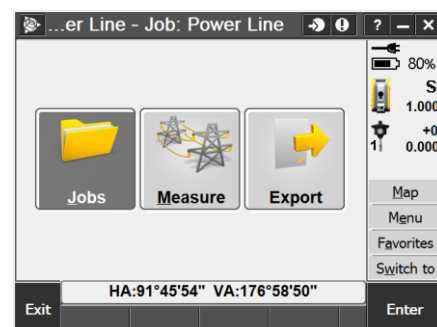
To save time, all cable measurements can also be performed using video-assisted robotic measurements using Trimble VISION™ technology, if supported by the total station being used.

DESIGNED FOR SPEED AND PERFORMANCE

Trimble Access Power Lines is the ideal application for companies who perform electricity utility surveys.

This easy-to-use software significantly increases productivity. Users used to Trimble Access will feel comfortable immediately; new users are assisted by guided workflows to minimize the likelihood of errors.

When combined with a VISION-enabled total station, the cable can be measured in seconds.



DEFINE

FEATURE	DETAILS
Trimble Access based JOB handling	<ul style="list-style-type: none">• New job• Open job• Properties of job• Review current job• Point manager• Map
Key point identification	<ul style="list-style-type: none">• Measure key points on the power pole and mark them as<ul style="list-style-type: none">○ Virtual Plane○ Pole Center
Automatic trigger	<ul style="list-style-type: none">• Add virtual plane points to a list of planes used for stakeout• Launch cogo calculations based on method

MEASURE

FEATURE	DETAILS
Measure	<ul style="list-style-type: none">• Measure Structure• Measure Power Line• Site Control<ul style="list-style-type: none">○ GNSS Topo workflows○ Conventional Topo workflow• Calculate Pole Center Location

EXPORT

FEATURE	DETAILS
Intersections	<ul style="list-style-type: none">• Export fixed format<ul style="list-style-type: none">○ All exports will show the staked out points on the line• Export custom format<ul style="list-style-type: none">○ Create further exports customized to your needs

MEASURE THE LINE

FEATURE	DETAILS
Preconfigured forms	<ul style="list-style-type: none">• Automatic total station configuration based on workflow• Configuration based on fast point collection and productivity
Specialized power pole measure form	<ul style="list-style-type: none">• Focus on clean workflow• Preconfigured DR target settings• Custom offset methods
Specialized line segment measure form	<ul style="list-style-type: none">• No manual point selection workflow• Completely automated• Chose to stake out via<ul style="list-style-type: none">○ A custom stakeout form○ A custom video form
Safety	<ul style="list-style-type: none">• Automatic back sight check at the end of line measurements

TYPICAL USE CASES

USAGE	DETAILS
Surveyors/Engineers	
Electricity companies	

MORE INFORMATION

INFORMATION
For more detailed information refer to the homepage: http://apps.trimbleaccess.com